

BROWSERS: A BRIEF HISTORY OF SECURITY VULNERABILITIES

PROJECT BY GROUP 5

SNEHA BALIGA / JULIA CHLASTACZ /
DANG TRUNG NGUYEN / MARIJA NIKOLIC /
BOGDAN NOVAKOVIC / PREETI PURI /
CHENYUN ZENG

DEN-
SITY
GN+



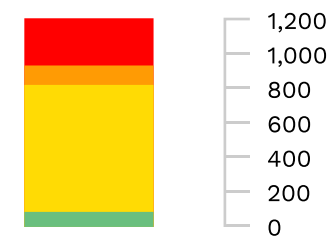
Vulnerabilities refer to the Common Vulnerabilities and Exposures (CVE) - a system that provides a reference method for publicly known information - security vulnerabilities and exposures.

Vulnerabilities Risk severity

- Critical
- High
- Medium
- Low

Risk refers to the potential that the threat will be realized for a particular vulnerability.

Number of open vulnerabilities



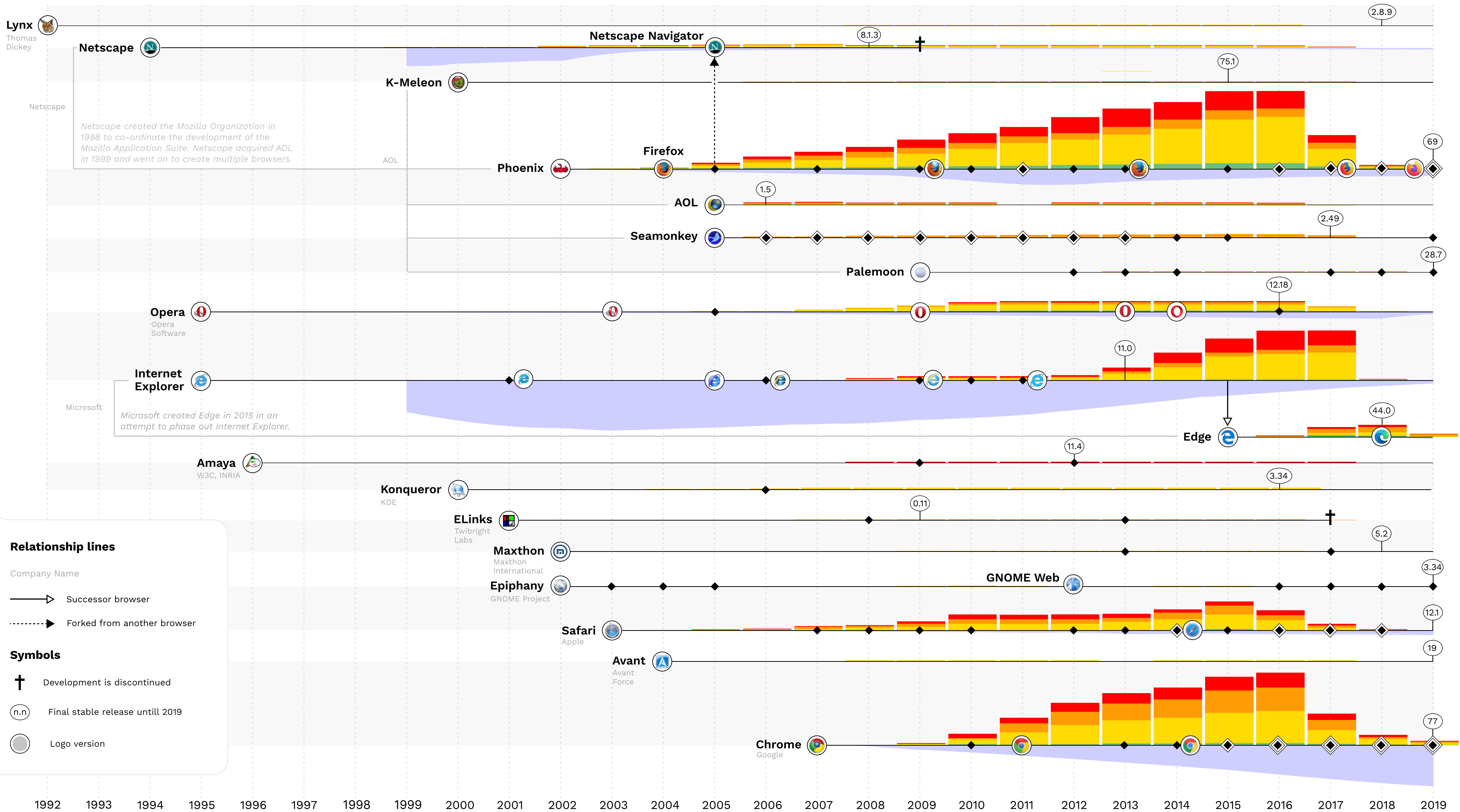
Open vulnerabilities refer to the number of vulnerabilities open and unresolved in that year.

Usage share



Usage share refers to the percentage of user share in the browser market. Only 7 browsers accommodate usage share of more than 1%.

Number of major security updates



ABOUT THE VISUALISATION

Almost every user accesses content on the internet through a browser. But how secure are they? This visualisation provides a brief history of security vulnerability numbers in browsers throughout history.

Using data on 19 browsers active between 1996 and 2019, the infographic provides an overview of the number of security vulnerabilities open each year. It further looks at the usage share of each browser and demonstrates a correlation between the two.

The visualisation seeks to answer the following questions: How many vulnerabilities are active in each browser per year? What is the scale of risk of these vulnerabilities? Can a browser's security be determined by its number of vulnerabilities?

The infographic provides an easy reading of the volume of open vulnerabilities in the form of bar graphs. It simultaneously maps out data on the browsers' user share underneath them. A timeline runs through each browser to illustrate its life and important milestones in its journey.

FACULTY

MICHELE MAURI / ANGELES BRIONES /
GABRIELE COLOMBO / SIMONE VANTINI /
SALVATORE ZINGALE

TEACHING ASSISTANTS

ANTONELLA AUTUORI / ANDREA BENEDETTI /
MATTEO BETTINI / TOMMASO ELLI /
ANDREA FEBRES / BEATRICE GOBBO